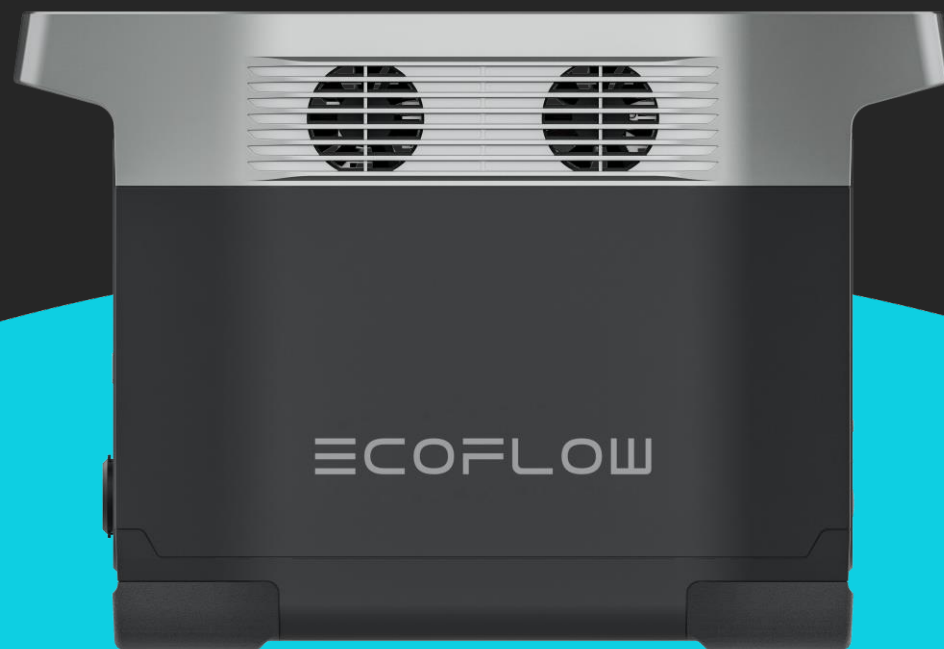
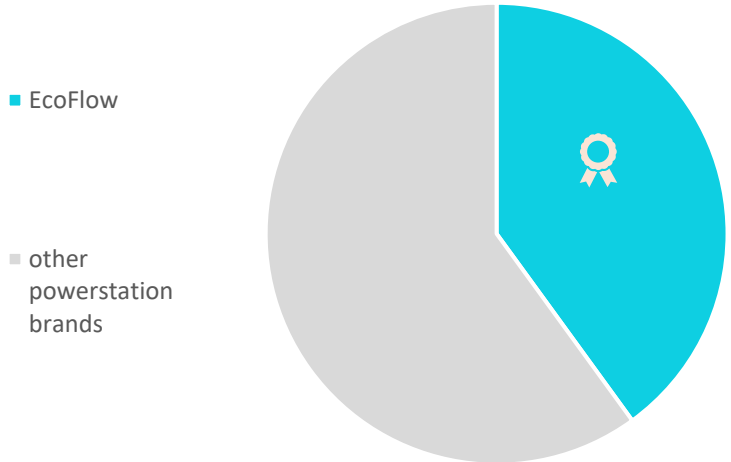
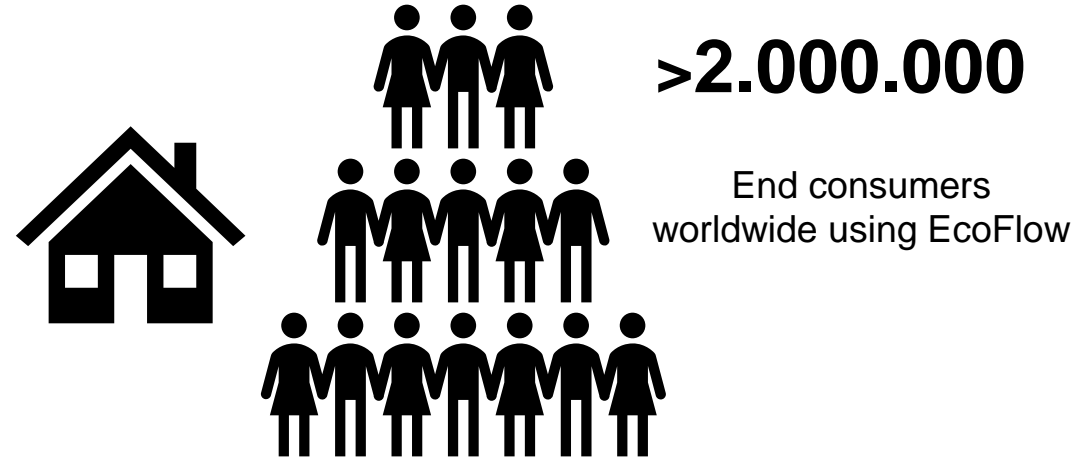
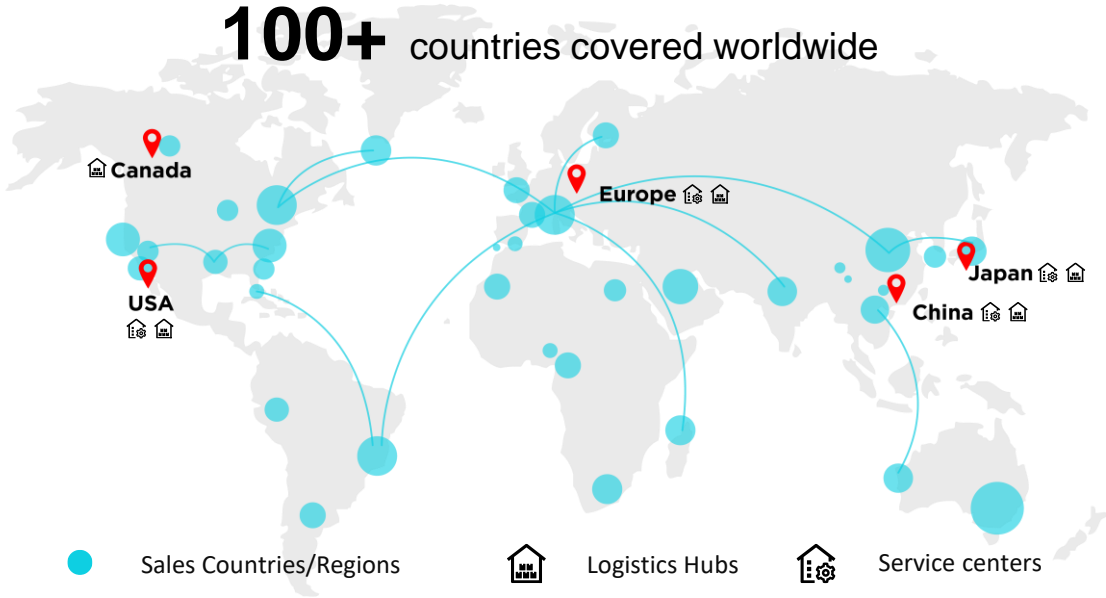


≡COFLOW

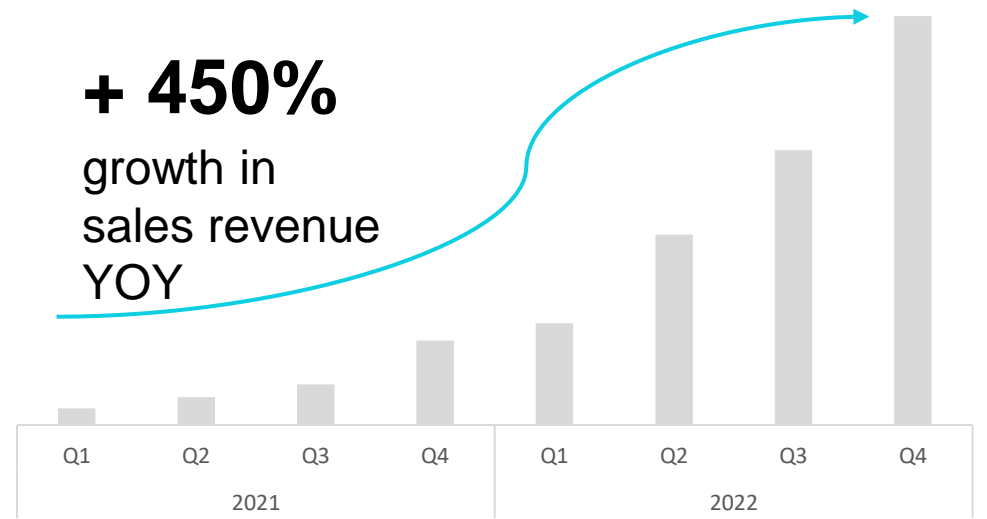


Introduction EcoFlow

100+ countries covered worldwide



>40%
Global market share of portable powerstations



Our Sales Network (EU)

EcoFlow has built an extensive distribution network in all EU countries.



> 100
Distributors

> 800
Resellers

Channel Marketing - Offline



Leroy Merlin - France



Hornbach - Germany



Foto Leistschneider - Germany



Leroy Merlin - Spain

User Scenarios



Home backup



Outdoor camping



Events



Boating



caravanning



Construction



Medical



EV Charging

TIME

TIME's 100 Best Inventions of 2021 - DELTA Pro

With extreme weather making power outages increasingly common, demand is on the rise for personal power generators to keep the lights on when the grid fails. While most generators are noisy and powered by gasoline, that's not the case with the **EcoFlow DELTA Pro** (\$3,599 per unit), a whisper-quiet battery-powered generator about the size of a beer cooler. The DELTA Pro can fully charge from a household outlet in three hours; it's also chargeable from solar panels or electric-vehicle charging stations. With a 3,600-watt-hour capacity, it can keep household essentials running for nearly 24 hours, and multiple units can be networked together to power a whole house for days. —*Don Steinberg*

Product Introduction



Portable Power Solutions for All Walks of Life

EcoFlow RIVER Series

256Wh - 768Wh

Capacity

600W – 1 600W

AC Output (with X-boost)

299 € - 799 €

Europe MSRP price

EcoFlow DELTA Series

1 024Wh – 10.8kWh

Capacity

2 700W – 4 500W

AC Output (with X-boost)

1 099 € - 3 999 €

Europe MSRP price



RIVER 2



RIVER 2 Max



RIVER 2 Pro



DELTA 2



DELTA Max 1600



DELTA Max



DELTA Pro

EcoFlow's Technological Advantages

X-Stream

- The world's fastest charging portable power stations.
- 0-80% in 1 hour

Expandable Power

- Customizable power options for any situation.
- Optional Extra Battery available for DELTA 2, DELTA Max, DELTA Pro.

Ecosystem

- Intelligent App control.
- Multiple power sources.
- Abundant accessories.

Safe and Smart

- Smart Battery Management System controls and regulates voltage, current, and temperature in real time to offer the safest battery performance.



Quiet, Ecological,
Portable,
Plug & Play, Easy
Maintenance, etc.

Product Specifications-New RIVER series



Product Name	EcoFlow RIVER 2	EcoFlow RIVER 2 Max	EcoFlow RIVER 2 Pro
Capacity	256Wh	512Wh	768Wh
AC Input	360W, Recharge from 0% to 100% in 60 mins	660W, Recharge from 0% to 100% in 60 mins	940W, Recharge from 0% to 100% in 60 mins
AC Output	US:2 outlets, 300W total (Surge 600W), X-Boost 600W	US:4 outlets, 500W total (Surge 1000W), X-Boost 1000W	US:4 outlets, 800W total (Surge 1600W), X-Boost 1600W
	JP: 2 outlets, 300W total (Surge 600W), X-Boost 600W	JP: 4 outlets, 500W total (Surge 1000W), X-Boost 1000W	JP: 4 outlets, 800W total (Surge 1600W), X-Boost 1600W
	High voltage: 1 outlets, 300W total (Surge 600W), X-Boost 600W	High voltage: 2 outlets, 500W total (Surge 1000W), X-Boost 1000W	High voltage: 3 outlets, 800W total (Surge 1600W), X-Boost 1600W
DC Outlets	USB-A *2 /USB-C *1 / Car power outlet*1	USB-A *3 /USB-C *1 / Car power outlet*1 / DC5521*2	USB-A *3 /USB-C *1 / Car power outlet*1 / DC5521*2
Solar Input	110W, 11-30V 8A Max	220W, 11-50V 13A Max	220W, 11-50V 13A Max
Battery	LFP chemistry , 3000 cycles to 80% capacity	LFP chemistry , 3000 cycles to 80% capacity	LFP chemistry , 3000 cycles to 80% capacity
Connection	Wi-Fi, Bluetooth	Wi-Fi, Bluetooth	Wi-Fi, Bluetooth
Version	100-120V: US, JP 220-240V: EU, UK, CN, AU, KR, Intl, CH, ZA	100-120V: US, JP 220-240V: EU, UK, CN, AU, KR, Intl, CH, ZA	100-120V: US, JP 220-240V: EU, UK, CN, AU, KR, Intl, CH, ZA
Dimension	245 x 214 x 142 mm	270 x 260 x 196mm	270 x 260 x 226mm
Weight	3.5Kg	6Kg	7.5Kg
What's in the box	RIVER 2, AC charging cable, car charging cable, user manual, app quick start guide, warranty card	RIVER 2 Max, AC charging cable, car charging cable, DC5521 to DC5525 cable, user manual, app quick start guide, warranty card	RIVER 2 Pro, AC charging cable, car charging cable, DC5521 to DC5525 cable, user manual, app quick start guide, warranty card

Product Comparison



DELTA 2



DELTA Max



DELTA Max +
DELTA Max Smart Extra
Battery x 1



DELTA Max +
DELTA Max Smart Extra
Battery x 2



DELTA Pro



DELTA Pro +
DELTA Pro Smart Extra
Battery x 1

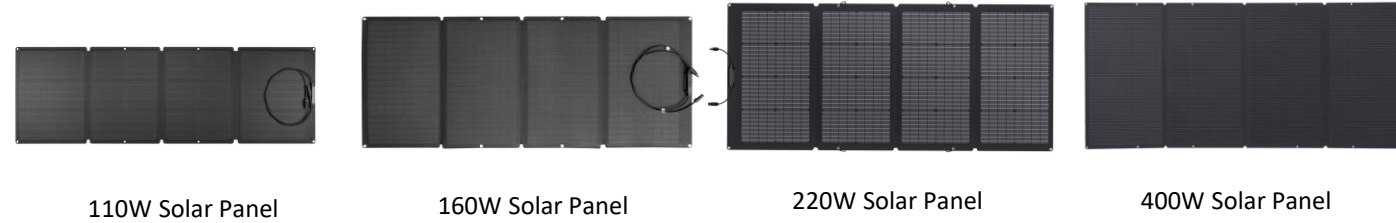


DELTA Pro +
DELTA Pro Smart Extra
Battery x 2

Capacity	1024Wh	2016Wh	4032Wh	6048Wh	3600Wh	7200Wh	10.8kWh
AC Output ¹	9 Ports; Total 1800W (Surge 2700W)	9 Ports; Total 2400W (Surge 4600W); X-Boost 3000W			10 Ports; Total 3600W (Surge 7200W); X-Boost 4500W		
DC Output ²	<ul style="list-style-type: none"> • USB-A 12W x 2 • USB-A FC 18W x 2 • USB-C 60W x 2 • Car Outlet 108.8W x 1 • DC5521 x 2 	<ul style="list-style-type: none"> • USB-A 12W x 2 • USB-A Fast Charge 18W x 2 • USB-C 100W x 2 • Car Outlet 126W x 1 • DC5521 x 2 			<ul style="list-style-type: none"> • USB-A 12W x 2 • USB-A Fast Charge 18W x 2 • USB-C 100W x 2 • Car Outlet 126W x 1 • DC5521 x 2 • Anderson x 1 		
X-Stream AC Recharge Time	1.6 hr	1.6 hr	2.8 hr	3.5 hr	1.9 hr		
X-Stream AC Recharge Input	1200W	2000W	2200W		2900W X-Stream at Wall Outlet 3400W X-Stream at EV Charger		
Solar Recharge Time ³	4-8 hr (400W x 1)	3.2-6.3 hr (400W x 2)	----	----	4-8 hr (400W x 3)	----	----
Solar Recharge	400W Max 10-65V	800W Max, 11-100V			1600W Max, 11-150V, 15A		
Car Recharge Time	10 hr based on 12V, <u>10A</u> charger	21 hr based on 12V, 8A charger	----	----	37.5 hr based on 12V, 8A charger	----	----
APP	X	✓			✓		
Battery Chemistry	LiFePO4	NCM Li-ion			LiFePO4		
Cycle life	800 cycles to 80%+ capacity			6500 cycles to 50%+ capacity, 3500 cycles to 80%+ capacity			
Dimension	15.7 x 8.3 x 10.6 in/ 40 x 21 x 27 cm	19.5 x 9.5 x 12 in/ 49.7 x 24.2 x 30.5 cm	----	----	25 x 12.2 x 16.4 in/ 63.5 x 28.5 x 41.6 cm	----	----
Weight	30.9 lbs / 14 kg	47.6 lbs / 21.6 kg	65.3 lbs / 39.6 kg	127 lbs / 57.6 kg	99.2 lbs. / 45 kg	83 kg	121 kg
Discharge Temp.	-20°C to 45°C			0°C to 45°C			
Recharge Temp.				-10°C to 45°C			

[1] X-Boost: feature to enable running some appliances with larger output requirement at reduced output. [2] Car Outlet shares total output power with the DC5521 ports [3] Standard Test Conditions: 1000W/m², AM1.5, 25°C

EcoFlow Solar Panel Specs



Rated Power	110W(+/-5W)*	160W (+/-5W)*	220W (+/-5W)* Front Side/ 155W(+/-5W)* Rear Side	400W (+/-10W)*
Open Circuit Voltage	21.7V (Vmp 18.5V)	21.4V (Vmp 18.2V)	21.8V (Vmp 18.4V)	48V (Vmp 41V)
Short Circuit Current	6.3A (Imp 6.0A)	9.6A (Imp 8.8A)	13A (Imp 12.0A) Front Side / 8.8A(Imp 8.4A) Rear Side	11A (Imp 9.8A)
Efficiency	22%	21% - 22%	22%–23%	22.4%
Cell Type	Monocrystalline silicon	Monocrystalline silicon	Monocrystalline silicon	Monocrystalline silicon
Connector type	MC4	MC4	MC4	MC4
Operating & Storage Temperature	-4° F to 185° F (-20° C to 85° C)	-4° F to 185° F (-20° C to 85° C)	-4° F to 185° F (-20° C to 85° C)	-4° F to 185° F (-20° C to 85° C)

[1] Rated Power is tested under Standard Test Conditions: 1000W/m2, AM1.5, 25°C

EcoFlow Ecosystem

EcoFlow Smart Generator (Dual Fuel)

Key features

1. Huge capacity for worry-free backup: 20kWh capacity with a standard portable LPG tank* for your DELTA Pro, DELTA Max and Power Kits
2. Use your fuel in an economical way: Save 40% fuel by connecting with your DELTA Pro & DELTA Max; auto start & stop the generator to avoid fuel wastage
3. Remotely control with your app at ease: digitally integrated with your EcoFlow App by remote start, ECO mode switch, AC charging ON&OFF, and control DC output
4. 4 ways of easy start customized for any scenario: Electric start, Auto start, app start, manual start
5. 5 alerts for ultimate protection: CO alert, fuel alert, engine oil alert, temperature alert, overload avoidance
6. Real-time monitor on LCD screen & App: real-time running specs shown on LCD screen & App about the fuel level, alerts
7. Jumpstart your LPG power backup with seamless design: Built-in regulator for easier carrying, Plug-and-Play LPG inlet, Automated LPG mode switch
8. Maintenance and noise made easy: as quiet as 56dB in 7m distance; designed for easy maintenance

* Measured with a 20lb LPG tank. The power is not limited to this amount. It depends on the size of the LPG tank.



Product Overview



EcoFlow Wave 2

The real fast cooling installation-free portable AC with heater.

Key features

- 6100 BTU heating and 5100 BTU cooling performance for vans, RV, tents, off-grid rooms, or outdoor spaces.
- Anywhere, anytime use: Weighs only 14.5kg without an add-on battery, making it more portable and compact.
- Anywhere, anytime recharge: can be recharged by AC/solar panel/car/power station.
- Up to 9.6h* runtime while on Eco mode powered by an add-on battery of Wave 2. (*Depends on testing results).
- The real installation-free and multiple accessory solutions.

Product Overview



Product Name: EcoFlow Glacier

Main Features

1. World's first portable fridge-freezer with an integrated ice-maker and plug-in battery
2. Up to 24 hours of runtime powered by a 298Wh plug-in battery
3. Efficient ice maker only takes 12 minutes to make 18 bullet-shaped ice cubes
4. Dual storage compartment with independent temperature control for simultaneous cooling and freezing
5. Fastest-speed cooling with energy-saving mode
6. Rugged design with green materials
7. Detachable "suitcase design" makes it easy to move

Product Appearance (not final)



EcoFlow Ecosystem

EcoFlow Smart Home Panel, Home Integration



EcoFlow Smart Home Panel

Integrate DELTA Pro to your home for home backup, energy management, and reducing your reliance on the grid.

Key Features

- Automatic backup with 20ms switch-over time
- Connect up to 10 home circuits
- Plug in the DELTA Pro Ecosystem and supply up to up to 7200W and 25kWh power
- Monitor and control your energy consumption remotely with the EcoFlow app
- Integrate with multiple and renewable power sources (Solar Panel and Smart Generator)

Dimension	31 x 48.8 x 11.5cm / 12.2 x19.2 x 4.5in
Weight	10 kg / 22lbs

EcoFlow Smart Home Panel – Home Backup & Energy Management



- Home backup that keeps your essential home circuits running during blackouts.
- Use stored energy and renewable solar energy during peak hours to reduce electrical bills.
- Access, track, and manage your energy consumption with the EcoFlow app.

EcoFlow Ecosystem



EcoFlow Power Kits

world's first compact modular power solutions for tiny homes and RVs.

Key features

COMPACT
Integration &
compact

ADVANCED
48V System

SMART
Monitor &
Control

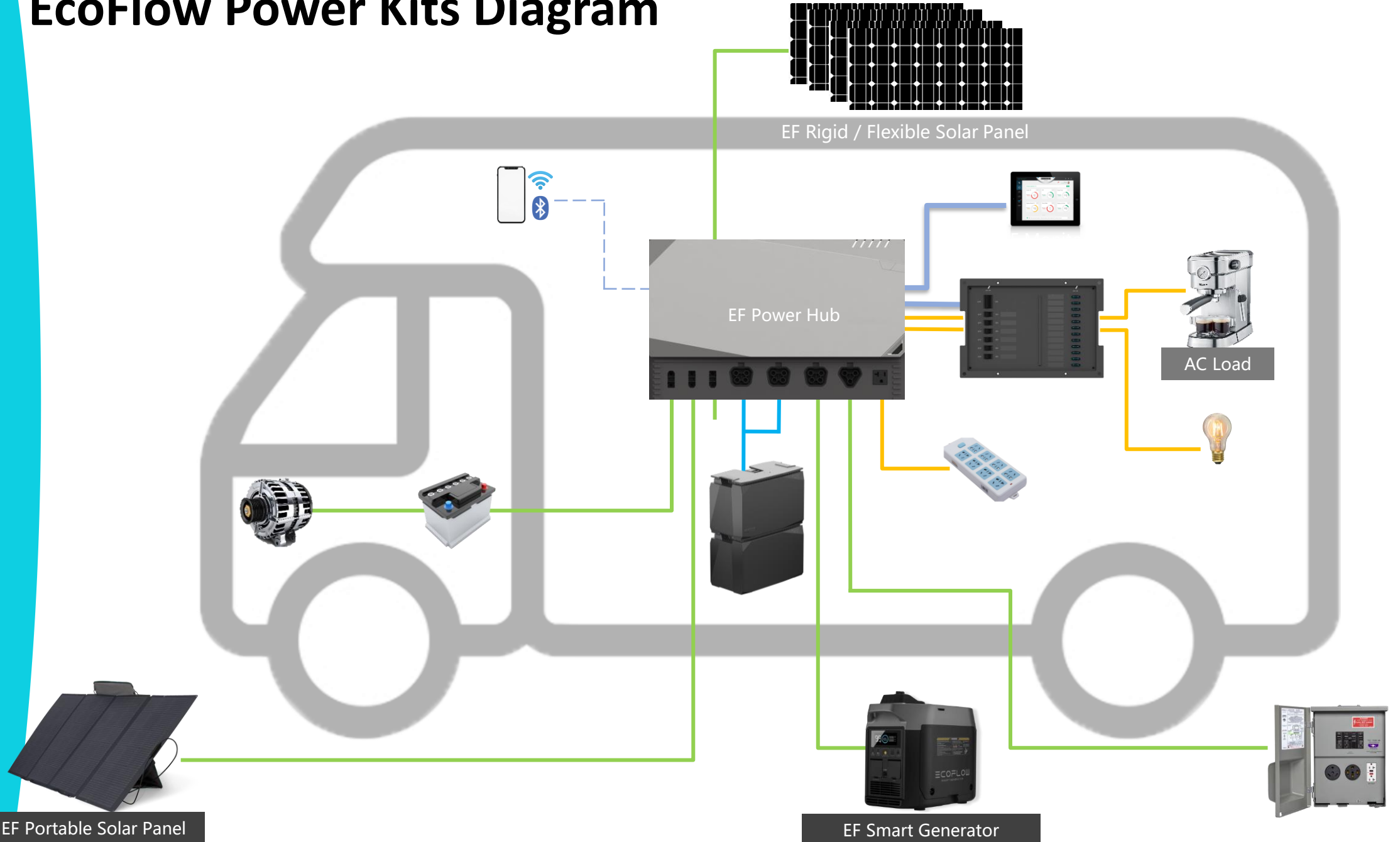
FAST
Multiple Charging

SIMPLE
Plug & Play

EXPANDABLE
Up to 15kWh

EcoFlow Power Kits Diagram

EcoFlow Smart Home Panel, Home Integration



EF Portable Solar Panel

EF Smart Generator

AC Load

Thank You